

RAKE AND HOE GARDEN CLUB

YEAR: 2011-2012

Photographs by Barbara Mullin

IDI category: **PHOTO ALBUMS**

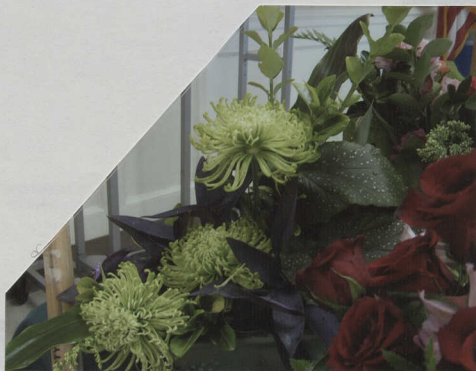
IDI Code: 2011-2012-Photo Album

Sept. 14, 2011 Rake & Hoe Auction meeting
Hostesses , Refreshments and Centerpiece



September 14, 2011- Rake & Hoe Auction Meeting
Items Donated to Auction





SW September 14, 2011- Rake & Hoe Auction Meeting
Items Donated to Auction

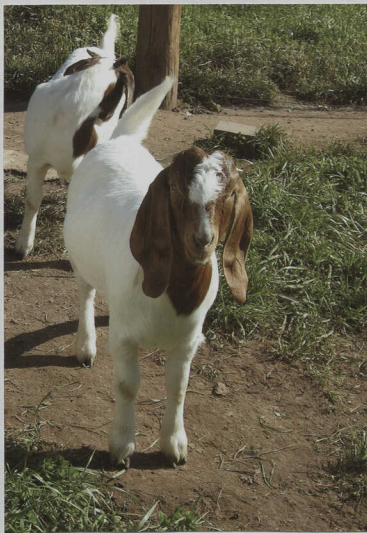


SSeptember 14, 2011- Rake & Hoe Auction Meeting

Alice Cowell Auctioneer and Marie Castaldo assistant



October 5, 2011- Field Trip to Eldorado Farm
African Goats-



Rake & Hoe General Meeting- Centerpiece- Bobbie Grecco
October 12, 2011 And Refreshments



Carol Schwin - Hostess



Rake & Hoe General Meeting- Linda Miski and her Cake
October 12, 2011



October 14, 2011- Fall Plant Exchange- at Alice Cowell's
Kris Luka, Mary Smith and Clara Minick show plants and seeds packs



October 14, 2011- Ceative Design Workshop
Presented by Renée Waite R & H members working away



Susan Dincen





Enca Inca



Kris Hulka



October 14, 2011- Ceative Design Workshop
Presented by Renée Waite



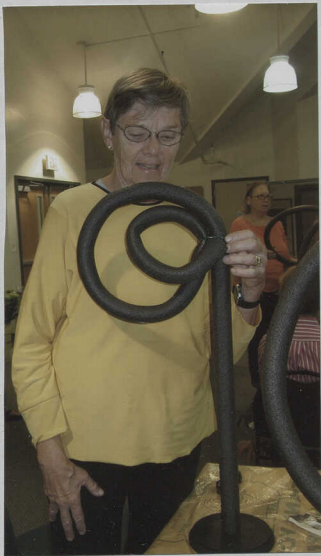


Renee Wauer

Regina Dewar



October 14, 2011- Ceative Design Workshop
Presented by Renée Waite R & H members working away



Nelson Pieterse 1/2



October 14, 2011- Ceative Design Workshop
Presented by Renée Waite R & H members working away



Peggy Smith



Barbara Muller



October 14, 2011- Ceative Design Workshop
Presented by Renée Waite R & H members working away



Marylyn Strajer

Kay Cross



Beth Siano



October 14, 2011- Ceative Design Workshop
Presented by Renée Waite R & H members working away



Joan Daley

Alice Correll



October 14, 2011- Ceative Design Workshop
Presented by Renée Waite R & H members working away



Nancy Small

Kara Jolley-Gale



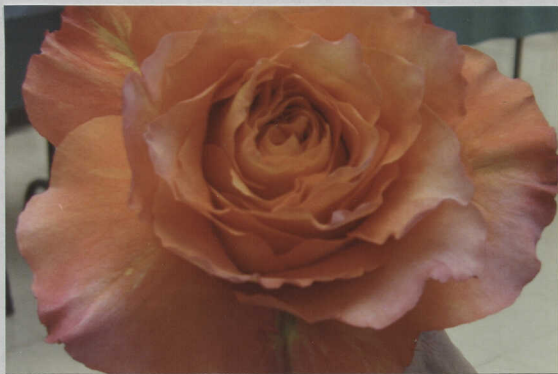
November 9, 2011- R & H General Meeting
Centerpiece and refreshments





11-9-11-Rake & Hoe with Westfield GC joint meeting
Kurt Christoffers of Mountainside Design Program



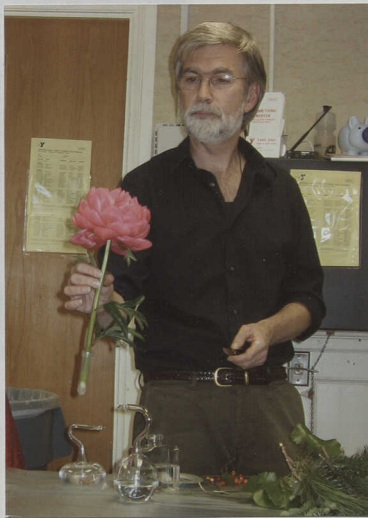


11-9-11-Rake & Hoe with Westfield GC joint meeting
Kurt Christoffers of Mountainside Design Program





11-9-11-Rake & Hoe with Westfield GC joint meeting
Kurt Christoffers of Mountainside Design Program







11-9-11-Rake & Hoe with Westfield GC joint meeting
Kurt Christoffers of Mountainside Design Program



11-11-11 at 11:00 am - Dedication of Blue Star Memorial

a perfect setting





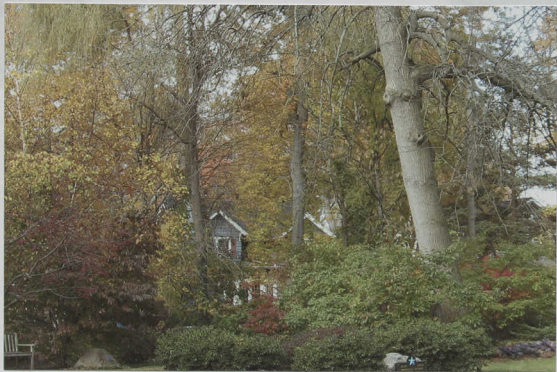
11-11-11 at 11:00 am - Dedication of Blue Star Memorial





11-11-11 at 11:00 am - Dedication of Blue Star Memorial









11-11-11 at 11:00 am - Dedication of Blue Star Memorial





11-11-11 at 11:00 am - Dedication of Blue Star Memorial





11-11-11 at 11:00 am - Dedication of Blue Star Memorial





11-11-11 at 11:00 am - Dedication of Blue Star Memorial





11-11-11 at 11:00 am - Dedication of Blue Star Memorial





11-11-11 at 11:00 am - Dedication of Blue Star Memorial





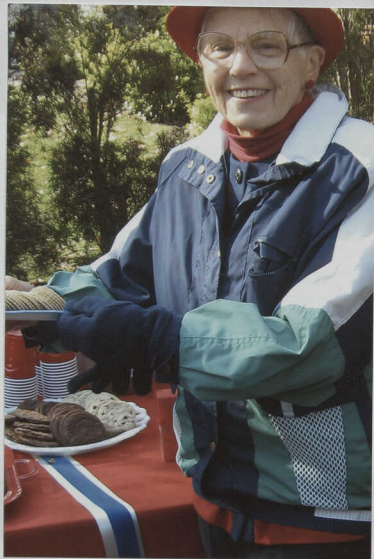
11-11-11 at 11:00 am - Dedication of Blue Star Memorial





11-11-11 at 11:00 am - Dedication of Blue Star Memorial





11-11-11 at 11:00 am - Dedication of Blue Star Memorial





11-11-11 at 11:00 am - Dedication of Blue Star Memorial





11-11-11 at 11:00 am - Dedication of Blue Star Memorial





Samples by coordinator - Colleen Schmidt





Alice Cozelli

Sherry Cincitiello







MaryGae Strauser



Nancy
Smith





Elaine Greenstein



Regina Dowd



Betty Siano

December 8, 2011- Rake & Hoe Decorates Mountainside
Borough Hall Materials and work done by Tracy Criscitiello





December 8, 2011- Rake & Hoe Decorates Mountainside
Borough Hall Materials and work done by Tracy Criscitiello



December 14, 2011- Rake & Hoe-Hostesses & Refreshments





December 14, 2011- Rake & Hoe- Holiday Design project
Put together by Helen Pasterczyk- Wonderful!





December 14, 2011- Rake & Hoe- Holiday Design project
Put together by Helen Pasterczyk- Wonderful!



December 14, 2011- Rake & Hoe- Holiday Design project
Put together by Helen Pasterczyk- Wonderful!



December 14, 2011- Rake & Hoe- Holiday Design project
Put together by Helen Pasterczyk- Wonderful!



January 11, 2012 Centerpiece by Barbara Mullin
Barbara and Kay Cross- Hospitality





January 11, 2012-R & H reg meeting- Say it with Orchids

Lane Graves designs combined plantings



January 11, 2012-R & H reg meeting- Say it with Orchids
Lane Graves designs combined plantings



January 25, 2012 -R & H Creative Design with Kay Cross



January 25, 2012 -R & H Creative Design -
Alice Cowell & Colleen Schmidt



January 25, 2012 -R & H Creative Design -
Helen Pasterczyk & Barbara Mullin



January 25, 2012 -R & H Creative Design -
Beth Siano & Susan Dinan



February 8, 2012-R & H Barbara Mullin with centerpiece





March 14, 2012- R & H Flowers and Refreshments
Joan Festa and Mary F. Smith



March 22, 2012- R & h plant identifier workshop
Helen Pasterczyk researched for Lee Perry



March 27, 2012- Photo mounting Worksop at Inge Bosserts

Carolyn Pulliam, Irene Greenstein, Lee Perry, Ingw, Kat Cross
and Helen Pasterczyk









May 9, 2012- Lovely Centerpiece by Fran Brader



May 9, 2012-Hostesses-Regina Dowd, Vivian Davidson & Mary Smith



May 16, 2012-Spring Plant Exchange & Perennial Division workshop
Fun had by all





May 16, 2012- Plant Exchange & Perennial Division workshop
Fun had by all





May 16, 2012- Plant Exchange & Perennial Division workshop
Fun had by all





The Highline NYC - Horticulture Field Trip 5-23-2012

Secret Garden Tour – May 31, 2012

Drive East on Broad Street past Fairview Cemetery and make a right onto West Court. Then immediately make a right onto Eastgate Square.

12 Eastgate Square

12 years ago my garden consisted of large boulders which acted as a retaining wall holding back the hill and 4 Azalea bushes. Looking at the top of the hill you will see a 20' Blue Spruce tree which gives me such please every time I look at it. It was my first planting, starting out around 5' tall.

You will notice creeping evergreens enhancing the large boulders with an angel overlooking the garden. There are day lilies, hydrangea, miniature roses, ferns and ornamental grass as a background to help make the shady part of the garden more interesting.

Surrounding the patio, are many perennials and hostas. There are phlox, lupines, a butterfly bush with added annuals for spots of color. The bakers rack has become an outdoor garden enhancement to display some of my favorite little owls and rooster. The dogwood tree is a late bloomer and also adds such wonderful color in late July.

There are two special items that were gifts from a very special friend, the beautiful bench by our antique table and chairs and the garden sculpture in the corner by the back steps "Scatter Seeds of Kindness" which is something I promote on a daily basis.

Betty Lynch

Go back to Broad Street and make a left, then turn right onto Woodland Ave. Continue on Woodland to the traffic light. Go straight through onto New Providence Road. After crossing Route 22 make the first left onto Apple Tree Lane.

269 Apple Tree Lane

As with most gardens, mine is definitely a work in progress. I purchased my home in late 2007. With three young children (including a newborn), I was overwhelmed by the state of the yard. The grass was dying, there was a tremendous amount of concrete around the pool, a handful of hostas, and a few other dying plants. The front landscaping was overgrown. The home had been vacant for nearly two years, and it showed.

I was raised in NH and was taught about gardening from the time I could walk and talk. My mother is a very avid gardener and her father was a professional gardener who designed gorgeous flower gardens for the State of NH. Currently we own and operate a landscaping and construction business so I have the good fortune of having accessible and relatively inexpensive help and wholesale pricing on plants and other landscaping materials. We set right to work and removed concrete and replaced some areas with pavers and other areas with trees and other plantings. My goal is to have a beautiful garden, rich in color and texture. I like the surprise of turning a corner and seeing one of my favorite flowers in bloom (peonies at the moment, which take my breath away!).

While my property is not very big, and the pool takes up a lot of space, I have tried to create a private and serene oasis. While spare time is exceptionally rare at this stage in life, I try to carve out some minutes during the day to just walk through the garden. I marvel at the birds and butterflies and admire the plants.

I am sorry that I will not be home on the day of the tour, but I hope you all enjoy my garden!

Lora Ford

Go down New Providence Road and make a right onto Route 22W. Take the Lawrence Ave. U turn jughandle, stay in the right lane and exit onto Lawrence Ave. Then make the third left onto Orenda Circle and stay to the left.

364 Orenda Circle

First, I want to welcome you to my garden. My late husband and I moved to our house on Orenda Circle in 1971. At that time, there were 3 triangular evergreens and one huge weeping willow in the back. A few azaleas and two tall evergreens, one on one end of the house and the other on the other end. We removed all the evergreens and the willow tree and planted our favorite shrubs, trees and flowers. My husband was Japanese and he liked his native plants. Thirty eight (38) years ago he planted a Ginko tree seed which has grown to a great height (luckily it's a male). He also planted a Japanese Wisteria and

built a support for it. We brought in some top soil and made three blocked beds to plant our vegetables and herbs. Then slowly we added trees, shrubs and flowers. I cannot pick a favorite because I love all my plants, but some that have special meaning for me are the ones planted by my husband (he passed away in May 2010) and a fig tree (actually more like a bush) that was in my mom's garden (she passed away in 2007). I will not mention every tree, shrub and flower because it is after all "a *Secret Garden*" tour, right?

When we purchased our house, the survey showed a "paper street" which ran along the East side of our property. Eventually, the Town decided not to go ahead with the street because no one wanted it, so we were given an extra 30' x 125' plot, which was overgrown with weeds and debris. In that parcel we planted flowering Cherry Trees, Russian Olive trees, coneflowers, roses, phlox, and various other plants which I hope you will enjoy seeing.

Gardening for me is like therapy only better. When I lost my mom and my husband, I don't know what I would have done if I did not have my garden. When I am working in my garden, I feel I am part of nature and my mind is clear. I must thank my mom for my love of gardening, she used to take cuttings from any plant in my garden and in her friends' gardens, put it in the ground and it would grow strong and healthy. I don't have that talent, but am grateful to her for showing me the beauty of nature.

Connie Sato

Back onto Lawrence Ave. head toward downtown Westfield, #1021 will be on your right

Please Note - The home owner has specifically requested that we enter through the front door so that the garden can be seen from an upstairs window - her favorite view. She will then direct us out to the backyard

1021 Lawrence Avenue

When we moved into this home in 2000, much of the yard had been landscaped by Craig Stock. As always, he had done a lovely job with the shape of the beds he installed, and had given the portion he did great structure. He had used grasses and deciduous plants at the front of the house for a more modern look. I longed for something more traditional. As an aside, I was surprised to find, in the 90-yr old house, that there were NO daffodils!

My aims in gardening are to

- 1) have the upkeep be as easy as possible; (If a plant can't look good with minimal trimming and a year of neglect, then it does not belong here. I spread Osmocote in the spring and I do spray the roses that need it.)
- 2) reuse as much as possible; (I took the original grasses to the eastern shore of Maryland. I moved the Anthony Waterer Spirea to the hillside in the backyard. I divided hostas from the bottom backyard and spread them under the trees in the front. I ripped out the vinca along the edge of the top yard and divided the liriopse to use there. When the rhododendron and azaleas that I put in along the front of the house outgrew the space, I moved the rhododendron to the side of the house. The boxwood from the top of the front stairs were just moved to the back corner of the yard to fill the last remaining dead space.)
- 3) outsmart the pests; (We have had a groundhog colony digging holes around our backyard. As a result, most of the plants there are either spiky or fuzzy. It is limiting in terms of texture, but did get discouraging for the oversized rodents. Getting two Jack Russell Terriers also helped.)
- 4) concentrate the color; (I tend to do beds with color themes, though this is not as clear in year 12 as it was in year 2. I've also learned that I like mixed color.)
- 5) learn and grow. (I had not done large-scale gardening before this yard, and I have learned quite a bit about scale, layout, maintenance, and plants.)

Betsy Vaden

Continue on Lawrence and make a right onto Dudley Ave. Proceed 3 blocks to Clark Street and make another right. #603 is at the intersection of Edgewood Ave.

603 Clark Street

We are very pleased to share our love of gardening with each of you. My husband and I have designed and maintained our property for the past 20 years. Our choice of shrubs and perennial flowers have been carefully selected to enhance our 1890 Victorian home. Our combined love of landscaping and gardening has been a strong part of our 30 year marriage and 28 years residing in Westfield. Our half acre property has 4 very distinct quadrants. The front and corner yards consist of old specimens of wigelia, quince apple, hybrid lilies, peony bushes and wisteria vines. The side yards consists of several perennial beds filled with over 40 varieties of plants including 12 lacecap hydrangea bushes and a 100 year old cucumber tulip tree housing an old wooden swing. Our back yard has been transformed into a formal English garden complete with a fountain planted with 30 varieties of vegetables and herbs. White and lavender lilacs and a hosta garden border the vegetable beds. We will be available at the tour for questions on Thursday morning. As a master gardener and a professional florist I can be reached for designs and consults of new or existing gardens at 908-337-7031 or gardener1955@yahoo.com. Enjoy

Pam Newell

Back down Clark and make a right onto Dudley. Then make a slight right onto North Ave. and turn left at the traffic light (Crossway Place). Continue straight across South Ave. and the street changes to Scotch Plains Ave. Follow to the end and make a right on Dartmoor. #776 is at the intersection of Norman and Dartmoor

776 Norman Place

I started carving out flower beds in the front yard due to the lack of sun in the back garden. Mixed in with the trees and shrubs are a variety of perennials both native and non-native. So there is almost always something in bloom. The dogwood, yews, Alberta spruce, Andromeda and peonies are all original to the house but everything else has been added during the years that we've been here.

In the meantime, I have discovered that there are quite a few plants that can tolerate shady sites, and I also experiment with those marked "partial shade" to see if they will adjust to the difficult conditions in the back yard. It's not easy for them what with all the trees and shrubs, and deer and rabbits – only the strong and inedible survive!

Carole Smillie



No first garden

May 31, 2012- Secret Garden Tour- in order we visited





May 31, 2012- Secret Garden Tour- in order we visited





May 31, 2012- Secret Garden Tour- in order we visited





May 31, 2012- Secret Garden Tour- in order we visited





May 31, 2012- Secret Garden Tour- in order we visited





May 31, 2012- Secret Garden Tour- in order we visited





May 31, 2012- Secret Garden Tour- in order we visited





May 31, 2012- Secret Garden Tour- in order we visited



May 31, 2012- Secret Garden Tour- in order we visited



May 31, 2012- Secret Garden Tour- in order we visited



May 31, 2012- Secret Garden Tour- in order we visited



June 4, 2012- Designs for R & H Board- Flowers from Christoffers

2 views





June 4, 2012- R & H Board at nancy Smith's
Designs by Barbara Mullin with flowers from Christoffers



June 4, 2012- Board Meeting at Nancy Smith's-Refreshments
President Gayle Lechner with Recording Secy Irene Greenstein



June 12, 2012- Diana Kazazis part of 5 making designs for
June Luncheon.



**THE RAKE AND HOE GARDEN CLUB
ANNUAL MEETING AND LUNCHEON
ECHO LAKE COUNTRY CLUB
JUNE 13, 2012**

**CELEBRATING 60 YEARS OF GRACIOUS GARDENING
1952 - 2012**

Call to Order and Welcome

Gayle Lechner

Invocation

Karen Jolley-Gates

Luncheon

Business Meeting

Minutes

Treasurer's Report

Announcements

Awards

NGC

Vivian Morrison

Carole Kurtz

GCNJ

Vivian Morrison

Carole Kurtz

Club Awards

Kris Luka/Kay Cross

Program

Nancy Smith

Photography

Inge Bossert

President's Remarks

Adjournment

June 13, 2012- Rake & hoe June Luncheon- Fascinators



June 13, 2012- Rake & hoe June Luncheon- Fascinators





June 13, 2012- Rake & hoe June Luncheon- Fascinators





June 13, 2012- Rake & hoe June Luncheon- Fascinators

winners of contest

awards



June 13, 2012- Rake & hoe June Luncheon- Fascinators



June 13, 2012- Rake & hoe June Luncheon- Fascinators



June 13, 2012- Rake & Hoe June Luncheon- Awards
C Tan receiving Top National Award out of 22, 000 entries in
Smokey Bear Poster Contest





June 13, 2012- Rake & Hoe June Luncheon- Awards
C Tan receiving Top National Award out of 22, 000 entries in
Smokey Bear Poster Contest



June 13, 2012- Rake & Hoe June Luncheon- Awards
Barbara Mullin Receiving Nancy Wallace & Judy Kamp awards
Karen Jolley Gates making award



June 13, 2012- Rake & Hoe June Luncheon- Awards
Barbara Mullin receiving top public vote on photo contest at show.
Inge Bossert makes the award and gift



June 13, 2012- Rake & Hoe June Luncheon- Awards
Diana Kazakis accepts GCNJ award from Pres Vivian Morrison



June 13, 2012- Rake & Hoe June Luncheon- Awards
Elise Morano accepts Youth Award from GC NJ Flower Show
with R & H President- Gayle Lechner



June 13, 2012- Rake & Hoe June Luncheon- Awards
Diana Kazazis accepts Agnes Eggimann Award from Gayle Lechner



June 13, 2012- Rake & Hoe June Luncheon- Awards

Pam Kolb accepts second prize in photo contest from our Flower Show

Connie Sata - also tied for second - not present at luncheon



June 13, 2012- Rake & Hoe June Luncheon- Awards
Carol Kurtz and Vivian Morris (GCNJ) give youth Book of Evidence
Alice Cowell, Beth Siano and Joan Barna receive award

